



NIMS Internship Program

SHARPEN Your Performance @NIMS

<https://www.nims.go.jp/eng/hr-development/internship.html>

*Explore the world class
materials research
at NIMS*

Features of NIMS Internship Program

NIMS is Japan's sole national research institute specialized in materials science. We have created a number of materials that made a global impact. Our mission is to pave the way for a better future for humankind by solving issues in environment, energy, medicine, and infrastructure, focusing on advanced research and development of innovative materials including metals, ceramics, polymers and optical materials.

We promote the shared use of our world's leading research equipment and facilities with other institutes and accept a number of researchers and students from all over the world to train researchers and engineers who can be internationally competitive. As part of it, we provide NIMS Internship program and accept students enrolled in university and graduate school as intern. The participants can take part in the leading edge research studies at NIMS. For the outstanding students we provide financial support.

If you would like to use the world's leading research equipment and facilities, take part in the cutting-edge research projects and meaningful interactions with researchers from all over the world. We are looking forward to your application.



Benefits

Experience cutting-edge research activities



Develop skills for your career planning

Participate in some of our exclusive seminars at NIMS



Enhance your presentation skills

Interaction with highly-motivated students



Get connected to an interdisciplinary professional network

Outline



Eligibility	NIMS internship students must be a graduate/undergraduate student.
Application Closing date	Please check the website.
Duration	Up to 90 consecutive calendar days (1st) Up to 30 consecutive calendar days (2nd)
Financial Support	Duration of NIMS financial supports: Maximum 90 days Content of financial supports: <ul style="list-style-type: none"> — Daily Allowance (2,560 yen/day) — Accommodation Fee (Accommodations as determined by NIMS) * To get financial support, you should start the internship in April or beyond and end before end of March of the following year.
Certificate	A certificate will be issued after the final report is submitted.

How to apply



You may also refer to the group or laboratory website if they have. There are laboratories which present current and past internship activities.



Contact the researcher as soon as possible since they can supervise a limited number of students. You can contact the researcher before the application period starts.

▶ Step 1 Find the laboratory or researcher of your field of interest

How to find the laboratory/researcher

- NIMS Official Website <https://www.nims.go.jp/eng/index.html>
- NIMS Researchers Directory Service “SAMURAI” <https://samurai.nims.go.jp/>
- Website of Joint Graduate School Program <https://www.nims.go.jp/eng/hr-development/joint-graduate/index.html>
- Participation in the open events or the open laboratories during NIMS WEEK
- Reference from your university supervisor

▶ Step 2 Contact your prospective supervisor in NIMS (the NIMS researcher) directly by email

▶ Step 3 Send the documents listed below to the NIMS researcher by email

Necessary documents for application

- Designated form for NIMS Internship Program*1
- CV
- Student enrollment/registration certificate*2
- Official academic transcript*3

*1 You can download from the website below.

<https://www.nims.go.jp/eng/hr-development/internship.html>

*2 A diploma or certificate of master's degree is not considered as a student enrollment/registration certificate.

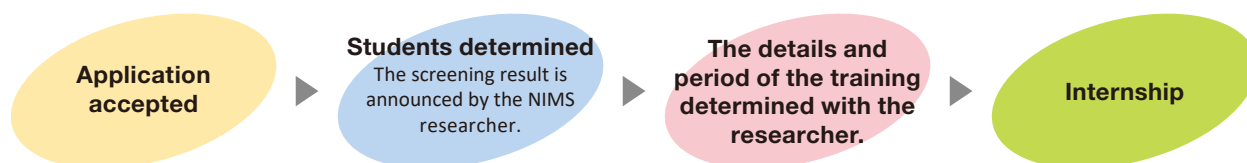
*3 Only an officially issued academic transcript is acceptable.

Doctoral and master's students are required to submit both undergraduate and graduate transcripts.

After receiving the application documents, the NIMS researcher will ask your university supervisor for a reference letter and contact you and your university supervisor for screening purposes. If the NIMS researcher agrees to be your prospective supervisor, the researcher will send application documents to the Graduate Program Office, NIMS.

From Application to Acceptance

The result will be announced about one and half months after application is accepted.



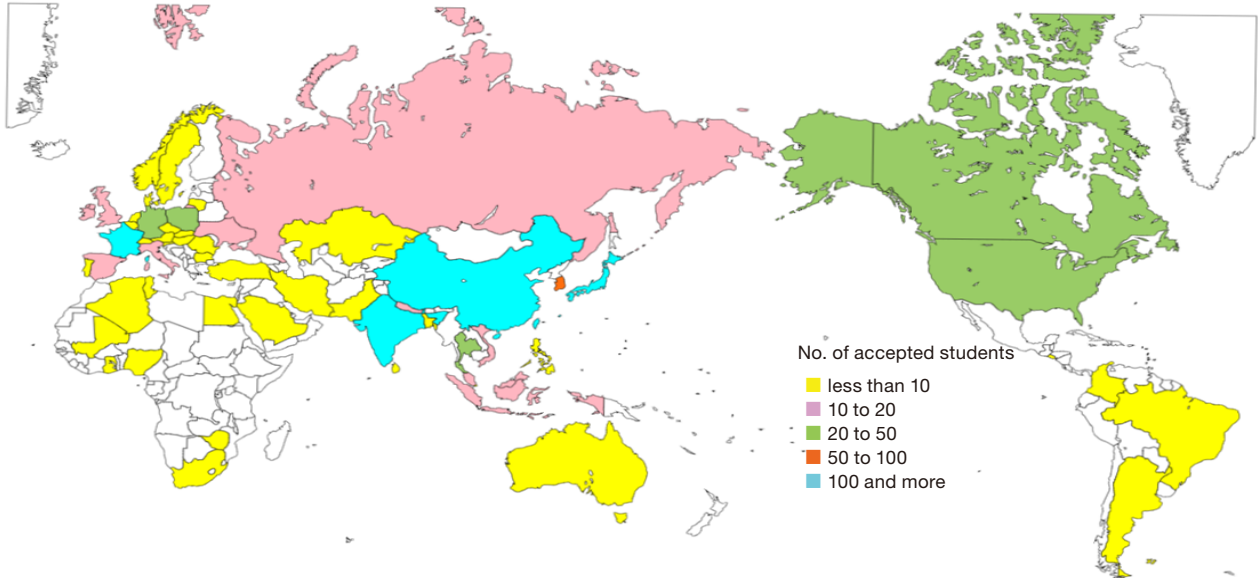
Notes

- This program does not guarantee the acceptance of all applicants' internship/financial support.
- Applicants (Students) are requested to contact NIMS researchers directly to find prospective supervisors in NIMS.
- Prior to the internship, participants need to purchase both overseas travel accident insurance and liability insurance.
- Participation in this program does not mean employment.

NIMS Internship Program Accepted Students

Number of students by country 2006-2022

NIMS accepted 1,916 excellent students from 58 countries all over the world by 2022



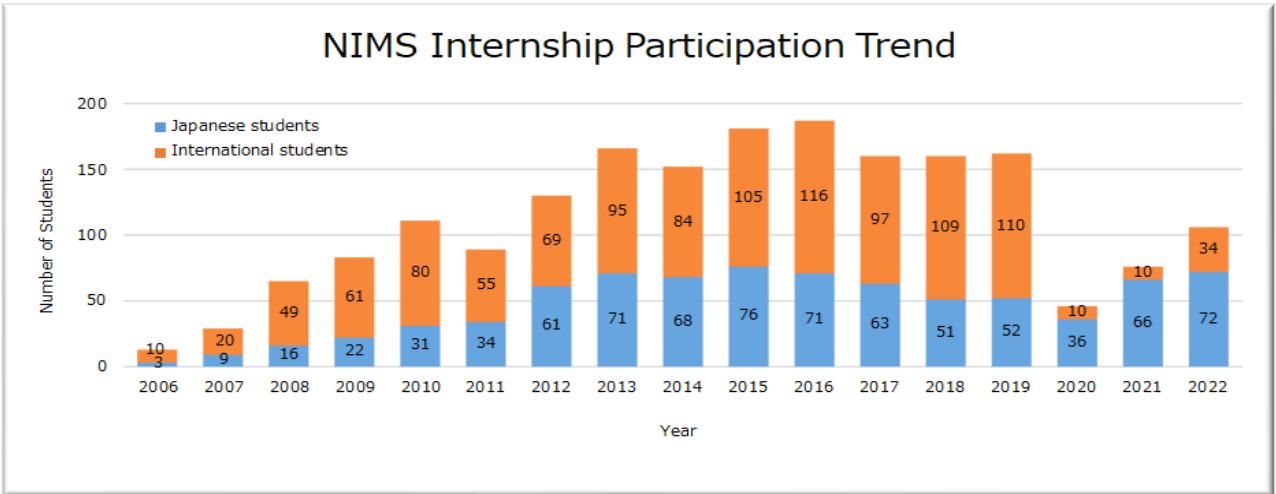
4

The accepted students came from the following universities:

ASIA	Peking University, Tsinghua University, Nanjing University, National Taiwan University, National Tsing Hua University, Seoul National University, Korea University, Indian Institute of Technology, Nanyang Technological University, Universiti Teknologi Malaysia, Chulalongkorn University
EUROPE	University of Oxford, University of Cambridge, Delft University of Technology, University of Twente, KU Leuven, Sorbonne University, Grenoble Alpes University, University of Rennes 1, RWTH Aachen University, Warsaw University of Technology, Charles University, Budapest University of Technology and Economics, Lomonosov Moscow State University
AMERICA	Johns Hopkins University, UC Berkeley, UCLA, Northwestern University, Pennsylvania State University, University of North Carolina at Chapel Hill, McGill University, University of British Columbia, McMaster University, University of Waterloo, University of São Paulo, National University of La Plata
OCEANIA AFRICA	Australian National University, University of Queensland, Flinders University, The University of Auckland, University of Tunis El Manar, University of the Witwatersrand

NIMS Internship Participation Trend

*Self-supporting students included



Feedback of Internship Students

● Fourth-year doctoral student

Being an internship student in NIMS is wonderful. I've got a lot of knowledge and experiences from the colleagues here. Staying in this environment with high creativeness and productiveness always motivated me working harder to catch up other people's achievement. We made a solid plan for my work during this stay, and it was found the preliminary results can pave the road for further detailed study. They always maintain the equipment very carefully. The technicians help us the operation and reply us very quickly. The relations with other colleagues are excellent. All of them are friendly and funny. I cannot have a wonderful studying life here without their accompanying. My host researcher is a very kind leader. He always patiently advised me and shed light on my studies whenever I struggled with some problems. He also gave me many supports for research activities, and daily life in Tsukuba. I'm very thankful for this opportunity.



● First-year master's student

The most impressive things to me of NIMS is the wholesome operation rules under which every department, group and person will work efficiently. And the multi-functional equipment makes sure a precise experiment result which is vital for science research. I have learned a lot in this internship term and realized my object sufficiently. Very appreciated for this chance supplied by NIMS, and thanks to my host researcher for a comprehensive guide to me.



● First-year master's student

It is my pleasure to study in NIMS and I had a great time here. In NIMS, I could aim at doing my experiment with sufficient equipment. Moreover, I absorbed more knowledge and learned more experimental technique in NIMS. Also, I completed the paper here. I really had a great unforgettable memories in this internship. I want to thank my host researcher for giving me this opportunity to work here and support me for my daily life. Further, he gave me lots of precious suggestions. All of members in lab were kind to me and helped me a lot.



● Second-year master's student

My internship was so wonderful because of good facilities, kind coworkers and nice living conditions. And also, achievement of experiments in NIMS was very great and hopeful for my future work. The laboratory was clean and well prepared for the experiment and the office was also clean and comfortable to stay in. The host took good care of me and coworkers kindly did their best to teach me the experiment and helped me so much to live in Japan. Everything was perfect in NIMS life.

● Second-year bachelor student

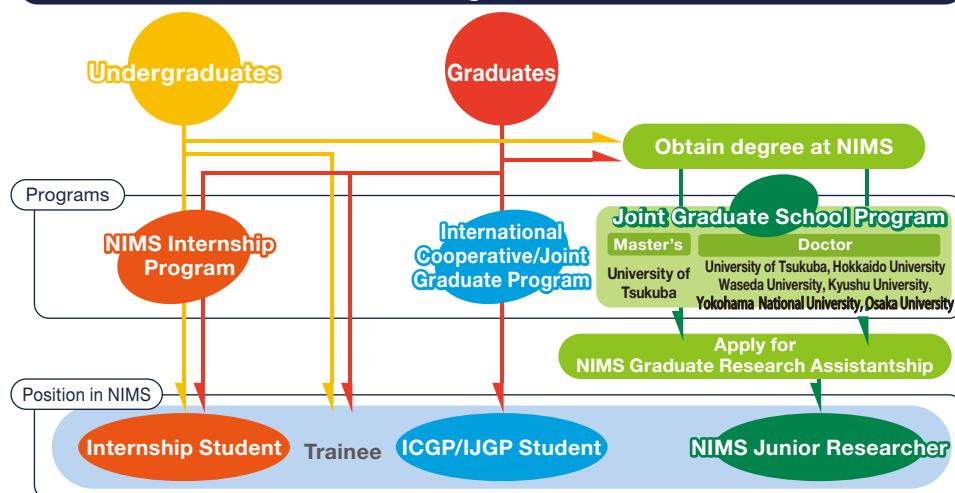
The internship was a great learning opportunity for many different science and engineering aspects. We achieved significant progress on longstanding issues and were able to produce results in a short period of time. The facilities at NIMS were great, as a lot of equipment and chemicals were readily available. The host was very welcoming and helpful for all aspects of the workplace and provided lots of support.



NIMS Student Programs

NIMS offers the following student programs:

Student Program Flowchart



Outline of Each Program

— First step to research at NIMS —

NIMS Internship Program <https://www.nims.go.jp/eng/hr-development/internship.html>

You can experience research activities using cutting-edge facilities under the guidance of NIMS researchers.

- ◆ Eligibility: graduate/undergraduate students of universities who passed the screening of NIMS
- ◆ Duration: up to 90 consecutive calendar days
- ◆ Financial Support: daily allowance (2,560 yen/day), accommodation fee (Max. 79,480 yen/month or 2,649 yen/day)

— Students spend a part of graduate school life at NIMS —

International Cooperative/Joint Graduate School Program (ICGP/IJGP) <https://www.nims.go.jp/eng/collaboration/institution/joint-graduate.html>

NIMS researchers accept PhD students from overseas cooperative universities and conduct research training through cutting-edge studies at our sites.

- ◆ Eligibility: PhD students of the university having ICGP/IJGP agreement with NIMS
He/she should have recommendation of the university supervisor and pass the screening of NIMS.
- ◆ Duration: 6 months to 12 months
- ◆ Financial Support: according to the agreement (daily allowance, accommodation fee)

— NIMS researchers provide thorough training until students obtain PhD —

Joint Graduate School Program <https://www.nims.go.jp/graduate/index.html>

NIMS leading researchers are appointed as supervisors of Japanese joint universities (University of Tsukuba, Hokkaido University, Waseda University, Kyushu University) and conduct research training of students.

- ◆ Eligibility: Students who passed the entrance exam of the joint graduate school programs at the universities
- ◆ Duration: from Admission to Graduation
- ◆ Financial Support: When a student passes the selection process, he/she will be hired as NIMS Junior Researcher and provided with stipend.

NIMS Graduate Research Assistantship

Outstanding students of the university having the joint agreement are hired at NIMS and are provided stipend for the contribution to the research work.

- ◆ Eligibility: Students of the Joint Graduate School or students who are scheduled to enter the Joint Graduate School and passed the selection process for NIMS Junior Researcher
- ◆ Financial Support:
 - Doctor course students: stipend for up to 14 days/month, maximum of three years
 - Master's course students: stipend for up to 11 days/month, maximum of two years The contract is one year and will be renewed subject to a yearly evaluation.



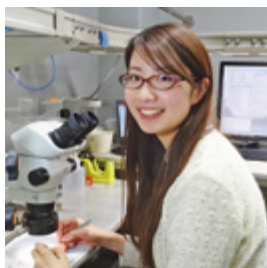
Career paths

Human Resources Development

Dr. Shiori SUGIURA

NIMS Postdoctoral Researcher

Quantum Transport Properties Group, Quantum Materials Field, Research Center for Functional Materials



STEP 1

NIMS Internship Program

STEP 2

Joint Graduate School Program
NIMS Junior Researcher

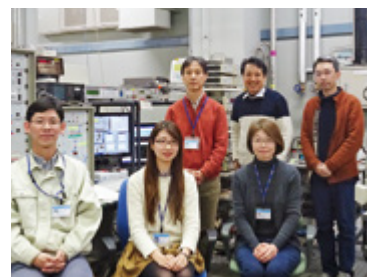
STEP 3

NIMS
Postdoctoral Researcher

I was informed about the NIMS internship when I visited the laboratory, which provided a chance for me to join the NIMS internship. What makes this program fascinating is that we can work with many innovative researchers, who are very active on a worldwide scale. The experience with the NIMS researchers during the internship made me enter the university through the Joint Graduate School Program, and obtain a degree while studying at NIMS.

Currently, I am promoting research using organic superconductors and supporting collaborative researchers. For the experiments, we use low temperature and high magnetic field systems (~ 20 mK, ~ 20 T), which are available only in NIMS. The experiences at NIMS, which continue from my internship, helped me become more proficient and adept in using measurements and gave me a sense of accomplishment. Now, my research life as a NIMS postdoctoral researcher is fulfilling day by day.

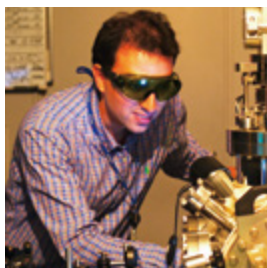
The key to a successful internship is sufficient preparation made with the host researcher. Sharing the information and planning for experiments are most important points. I hope that you will positively engage in research with your definite plans. The research life in NIMS will provide valuable experiences for you.



Dr. Hossein SEPEHRI AMIN

Group Leader

Green Magnetic Materials Group, Research Center for Magnetic and Spintronic Materials



STEP 1

Joint Graduate School Program
NIMS Junior Researcher

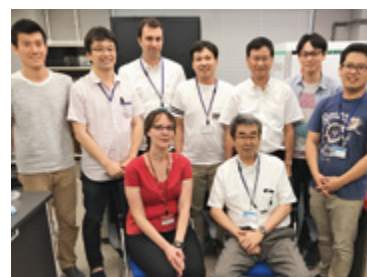
STEP 2

ICYS Researcher*

STEP 3

Permanent Researcher

When I started my university life, I had a dream to get PhD and be a good researcher. During my master's degree study, I have been working on two projects simultaneously and I realized beside studying the text books, it is important to be in an environment with advanced facilities enabling you to do your research as well as discussing with experienced and excellent researchers. I applied for several universities in different countries for my PhD study. At that time, I knew little about the Joint Graduate School Program of NIMS. However, this program was the only one that required me to visit Japan in person and take an entrance exam/interview. This was a great chance for me to see NIMS has not only great facilities but also excellent researchers and professors who I can daily discuss with. This visit made my mind that I want to be in this research environment which was the biggest benefit I gained from my time in the program. At the moment, my research is about the functional magnetic materials. During my stay in NIMS, my research has expanded to several topics related to the magnetic and spintronics materials, micromagnetic simulations, and advanced multi-scale microstructure characterizations. To the students who have a dream of being a researcher, I recommend you to visit NIMS once. You will realize this is the place giving you a chance to learn a lot by working with the experts, learning about many experimental techniques, and you can carry out your innovative research.



* ICYS Research Fellow is a researcher belonging to the International Center for Young Scientists, who is selected from all over the world to become a leading scientist in the next generation.

Information about Each Program

For the details of each program, please refer the following websites:

NIMS Internship Program

<https://www.nims.go.jp/eng/hr-development/internship.html>

International Cooperative Graduate Program

<https://www.nims.go.jp/eng/collaboration/institution/joint-graduate.html>

Joint Graduate School Program

<https://www.nims.go.jp/eng/hr-development/joint-graduate/index.html>

University of Tsukuba-NIMS Joint Graduate Program

<https://www.nims.go.jp/tsukuba/en/>

Hokkaido University-NIMS Joint Graduate Program

<https://www.nims.go.jp/hokudai/en/>

Waseda University-NIMS Joint Graduate Program

<https://www.nims.go.jp/waseda/en/index.html>

Kyushu University-NIMS Joint Graduate Program

<https://www.nims.go.jp/kyushu/>

Contact



国立研究開発法人 物質・材料研究機構
National Institute for Materials Science

Human Resources Development/Graduate Program Office
1-2-1 Sengen, Tsukuba, Ibaraki 305-0047 JAPAN
E-mail: nims-graduate@nims.go.jp